

LOYOLA UNIVERSITY CHICAGO

**THE OFFICE OF INSTITUTIONAL
EFFECTIVENESS**

Updated March 26, 2024



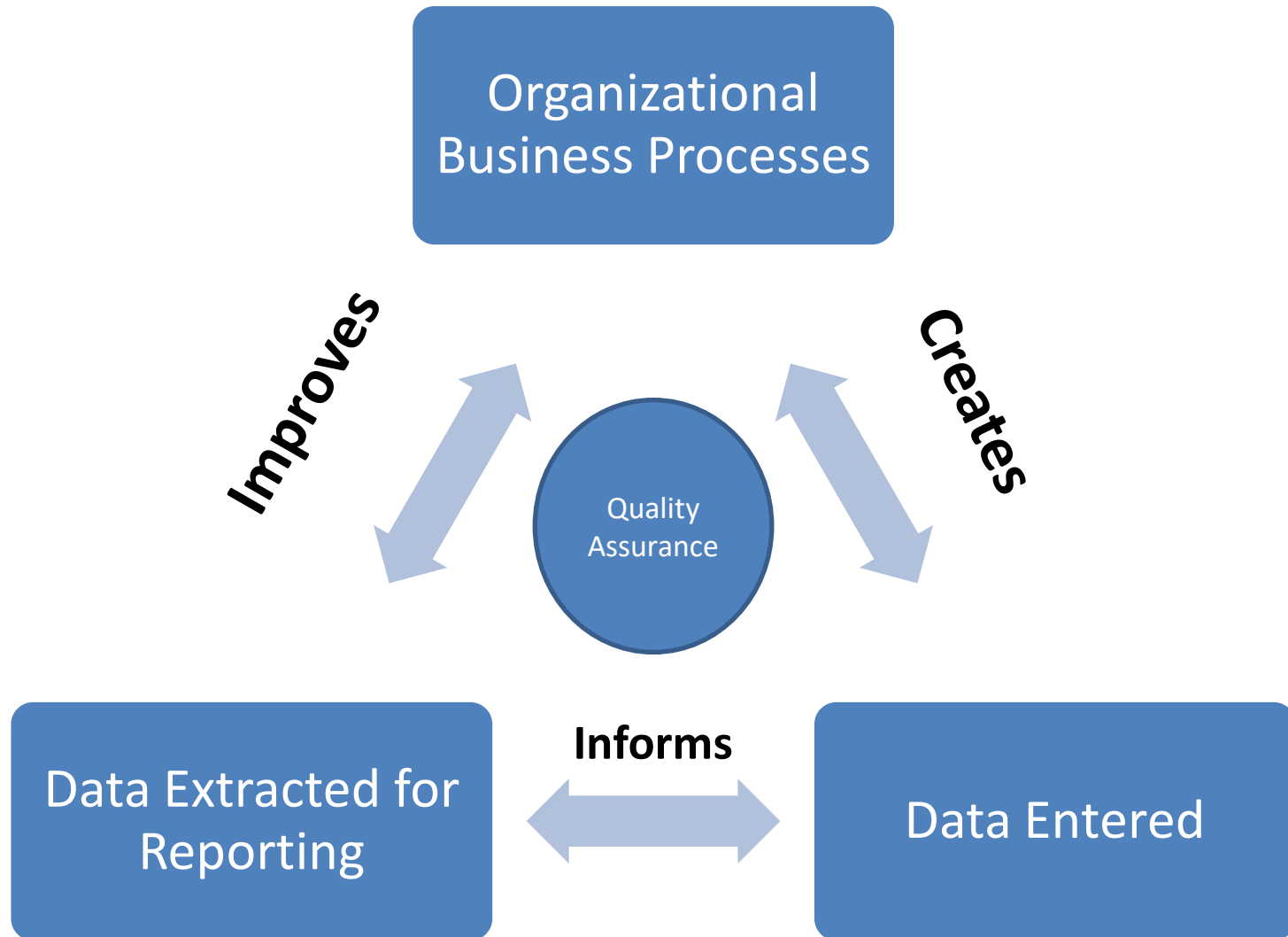
PRESENTATION OVERVIEW

- Overview of OIE
- OIE Functional Areas
- OIE Organizational Chart
- OIE Work Prioritization Process
- Questions to Consider

REFLECTION QUESTIONS

- What do you think the purpose of an institutional effectiveness office is?
- What are the best ways to convey that purpose and the office's priorities to the LUC community?
- What are the best ways we can partner with you and your team to advance institutional effectiveness?

What is the Role of Institutional Effectiveness (OIE)?



MISSION

Our charge in the Loyola University Chicago Office of Institutional Effectiveness (OIE) is to embody Loyola's Jesuit Catholic values. We guide leaders to reflect on information and analysis to optimize institutional effectiveness and advance Loyola's mission and values. We empower university leaders to ethically engage in evidence-informed decision-making that is grounded in sound data governance.

VISION

Our vision at the Loyola University Chicago Office of Institutional Effectiveness (OIE) is a culture of evidence-informed decision-making which aligns with our Jesuit Catholic values to improve our institutional capacity, quality, and stewardship.

PURPOSE

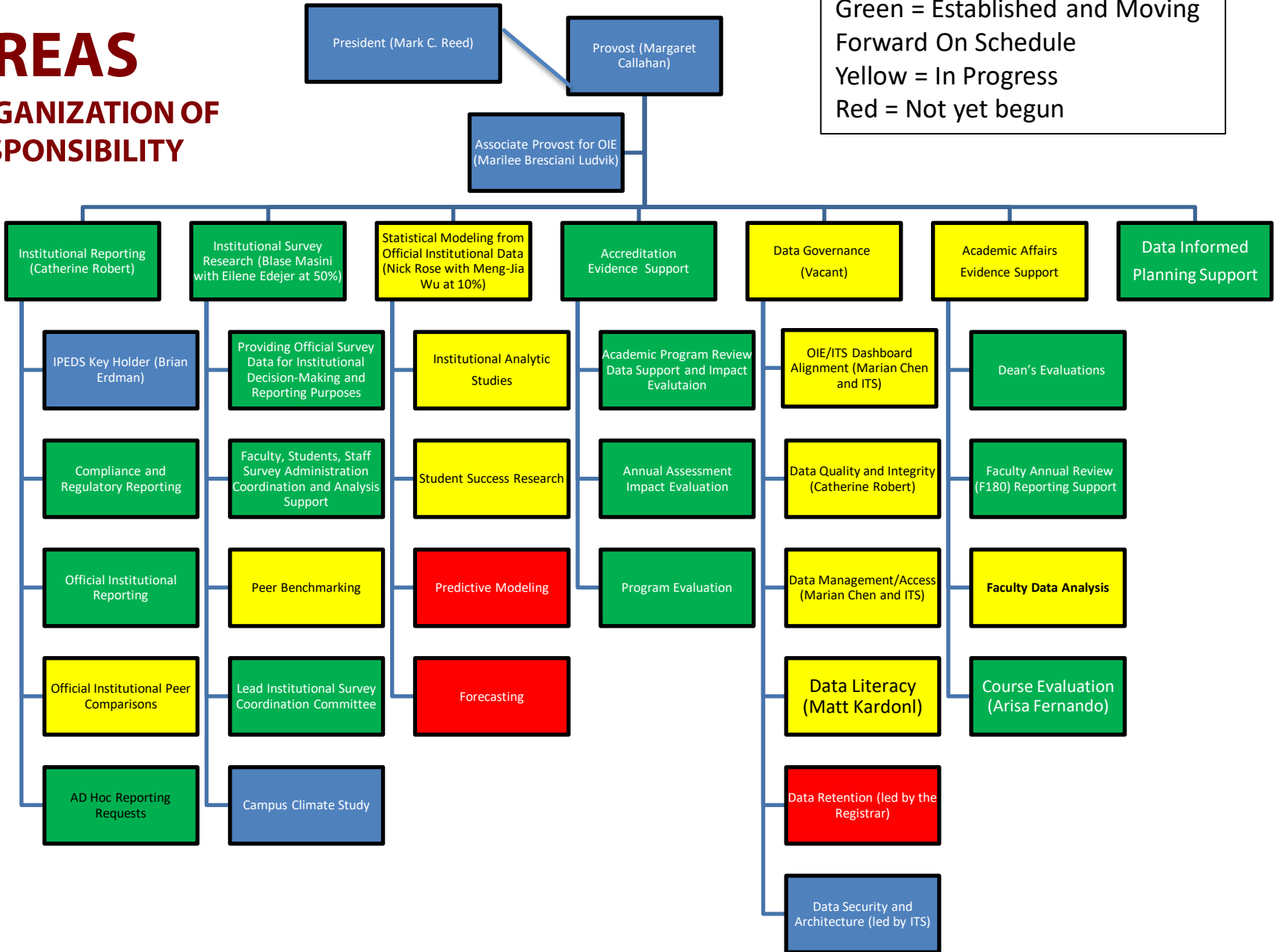
Rooted in the Jesuit values and mission of the University, the Loyola University Chicago Office of Institutional Effectiveness (OIE)

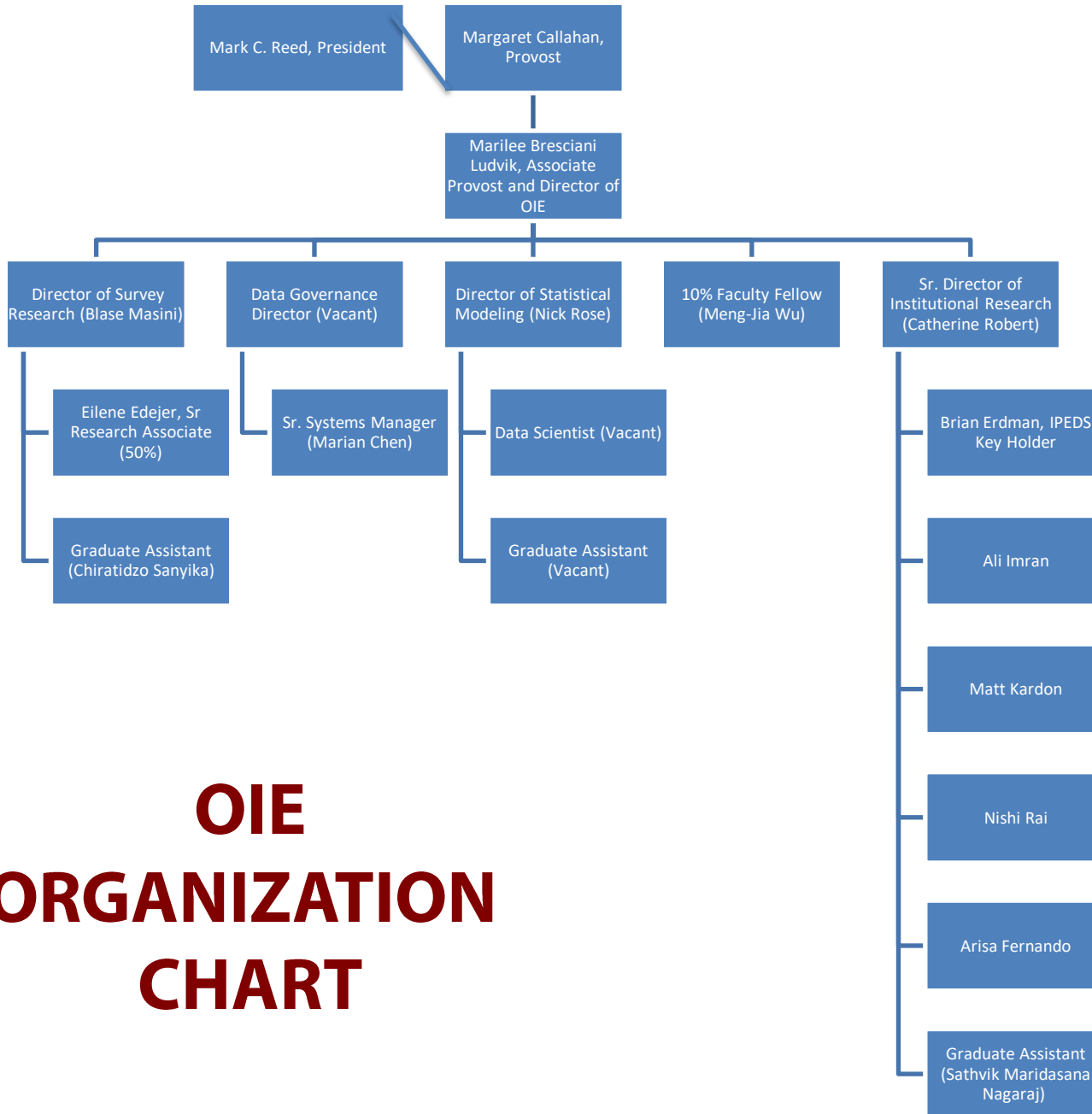
- Provide leadership as a trusted partner working with ITS and others across campus, to implement all aspects of data governance for officially reported institutional data.
- Engage the LUC community in discernment and dialogue examining how business processes influence data collected so that the reporting out of that data informs responsible improvements in institutional business practices and student learning.
- Advance continuous improvement by advocating for responsible and improved use of how data is used in institutional decision-making processes.
- Ensure that all of this is done in a timely manner, to the highest level of quality, and in alignment with Loyola's mission, values, and strategic objectives.

OIE FUNCTIONAL AREAS

ORGANIZATION OF RESPONSIBILITY

Legend: Blue = Context
 Green = Established and Moving Forward On Schedule
 Yellow = In Progress
 Red = Not yet begun





OIE ORGANIZATION CHART

DRAFT THEORETICAL FRAMEWORK -- OVERVIEW DEFINITION OF INSTITUTIONAL EFFECTIVENESS DATA COLLECTION AT LUC

I=INPUTS

1. Admissions Funnel Data and Yield Analysis*
2. Financial Aid Yield Analysis *
3. Enrollment Data *
4. FAFSA Applications Data*
5. Placement Test Data*
6. Intrapersonal competencies aligned with Jesuit Catholic principles (possibly administered during LUC 101)*
 1. [Compassion](#),
 2. [Social Justice](#)
 3. Self-Efficacy
 4. [Strength of Religious Faith](#), a
 5. [Moral Identity](#)
 6. Growth Mindset ([Citation Dweck, 1999](#))
 7. Readiness to Act with Empathy ([Citation Jazaieri et al., 2014](#))
 8. Self-Regulation ([Citation Schwarzer, Diehl, & Schmitz, 1999](#))
7. Student expectations of their experience and their success at LUC (possibly administered during LUC 101)
8. Slate Intent to Enroll Survey Results of Admit Withdrawn and Deposited students*
9. Number of applications for open faculty and staff positions** and ***
10. Engagement/touches with institutional and school-based awareness channels (paid, social, owned) and rates of conversion in the recruitment cycle*

E=EXPERIENCE

1. Persistence Analysis (including financial aid)*
2. GPA*
3. Frequency and type of student engagement in-class and out-of-class (via Engage and other tracking mechanisms)*
4. Levels of student engagement in-class and out-of-class *
5. Repeat instrument(s) used under Input for “interpersonal competencies aligned with Jesuit Catholic principles.*
6. Sense of Belonging (Measurement(s) TBD)* and ** and ***
7. Campus Climate Study for students, faculty, and staff (In planning process)
8. Learning Management System analytics
9. NSSE Engagement Survey (first-year and Seniors) *
10. [Annual Academic Program Monitoring](#)
11. Academic Program Review (in-class and out-of-class)* and **
12. DSD Program Review * and ***
13. Faculty and Staff Retention Data
14. Peer Comparison Data * and ***
15. Salary Equity Analysis ** and ***
16. [Policy and Practice Equity Analysis](#)
17. Number and Frequency of Professional Development Offerings ** and ***
18. Sophomore Satisfaction Survey *
19. Junior Satisfaction Survey *
20. Graduate Student Satisfaction Survey *
21. Faculty Research, Teaching, and Service Productivity (measured in 2023-24 Interfolio) **
22. Office of Research Services dashboards **
23. Data Sets created to report IPEDS and CDS *, **, and ***
24. NCAA Reporting *
25. [Community Engagement Collaborate](#) *
26. [Current student engagement on relevant social media and direct communication channels](#) *

O=OUTPUTS

1. Graduation Rates*
2. Time to Degree *
3. Terms to Degree *
4. See outcomes measurement draft plan at [DRAFT LUC Graduating Student Outcomes Data Collection Plan.docx \(sharepoint.com\)](#) *
5. Peer Comparison Data * and ***
6. Identifying alignment of academic program outcomes and intrapersonal competencies with career readiness skills desired by employers, graduate schools, and service agencies/community organizations. *
7. Community Social Impact of LUC alumni, students, faculty, and staff
8. Community Economic Impact of LUC alumni, students, faculty, and staff
9. APR Impact Analysis Report * and **
10. Repeat instrument(s) used under Input for “interpersonal competencies aligned with Jesuit Catholic principles.” Test for change over time at cohort level (independent samples pre-post) and individual (dependent samples pre-post) *
11. Employer Satisfaction *
12. Faculty and Staff Satisfaction ** and ***

OIE OVERVIEW OF PROJECTS

Can be Found Here - [Overview All OIE Projects.xlsx](#)



OIE PROJECT PRIORITIZATION



Ad Hoc Requests

Annual Internal Institutional Reporting/Analysis/Data
Gathering

Mandatory and
Compliance Reporting

**Review of OIE
Prioritized Project
Recommendations**

QUESTIONS TO CONSIDER

- What is missing from this overview that you expect from an OIE office?
- What are the best ways to invite in collaborations on work projects across the university?
- How can we be of better service to advancing institutional effectiveness?

Questions and Comments?
mludvik@luc.edu

THANK YOU



Preparing people to lead extraordinary lives